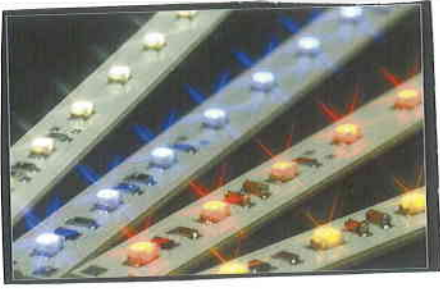


SMD-LEDs



Package Overview (PDF-File)

size 1206

- standard
- standard infra-red
- standard low current (2mA)
- bipolar one color
- bipolar two color
- bipolar one color low current (2mA)
- bipolar two color low current (2mA)
- duplex two color
- duplex low current (2mA)
- 3-color led (RGB)
- reverse through hole
- reverse through hole infra-red
- flat molding
- flat molding infra-red
- lens type (40°)
- lens type (40°) infra-red
- lens type (40°) low current (2mA)
- squint-led (45°) with lens (40°)
- squint-led (45°) with lens (40°) infra-red

High Power LED - size 1210

- 50mA infra-red
- 50mA with lens infra-red
- 100mA infra-red
- 100mA with lens infra-red
- 200mA infra-red
- 200mA with lens infra-red
- 300mA
- 300mA with lens

size 0805

- standard
- standard infra-red
- standard low current (2mA)
- bipolar one color
- bipolar two color
- low profile
- low profile infra-red

size 1208

- side view standard
- side view infra-red
- side view low current (2mA)

ceramic LED

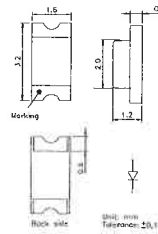
- standard

specials

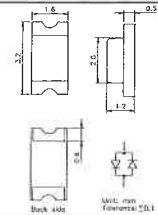
- UV-LEDs
- Thinfilm LEDs
- High Power LEDs

SMD size

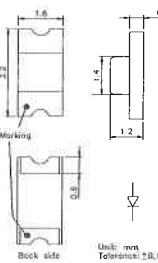
1206



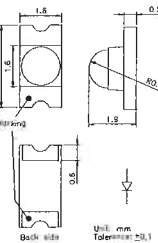
Type OLS-150



Type OLS-152 bipolar

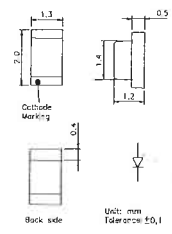


Type OLS-230



Type OLS-330 with Lens

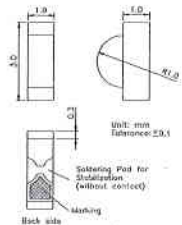
0805



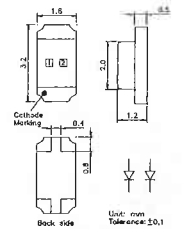
Type OLS-170

Type OLS-172 bipolar

other



Type OLS-210 Side Looking Type



Type OLS-130 Duplex



OCL-330

| Colour | Type | Light intensity [mcd] (20 mA) |
|--|---------------|-------------------------------|
| ■ red | OLS-330 MSD | 1400 |
| ■ yellow | OLS-330 MY | 1400 |
| ■ green | OLS-330 EG525 | 1600 |
| ■ blue | OLS-330 EB460 | 400 |



OCL-400

| Colour | Type | Light intensity [mcd] (20 mA) |
|--|---------------|-------------------------------|
| ■ red | OCL-400 MSD | 400 |
| ■ yellow | OCL-400 MY | 400 |
| ■ green | OCL-400 EG525 | 450 |
| ■ blue | OCL-400 EB460 | 120 |
| □ white | OCL-400 EW | 500 |
| □ warmwhite | OCL-400 EWW | 500 |

OLS-150
Size 1206



OLS-170
Size 0805



OLS-152
Size 1206
bipolar



OLS-172
Size 0805
bipolar



OLS-13x
Size 1206
duplex and
triplex



OLS-180
Size 0805
low profile



OLS-330
Size 1206
with lens, 40°



OLS-210
Size 1208
Side-view

